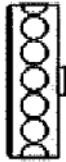


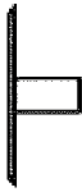
Drilled Holes in Sidewall



Drilled Holes in Tread



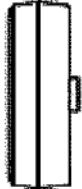
Cut Out Sidewall



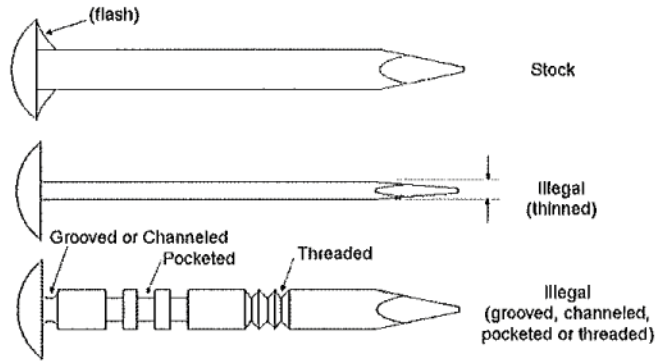
Speed Wheel



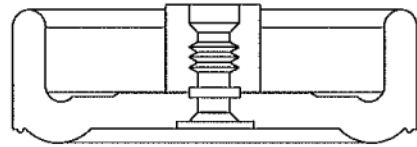
+ Coning and Cut Down Hub



V-Point Wheel



NO MATERIAL MAY BE REMOVED FROM THE INSIDE OF THE WHEELS.

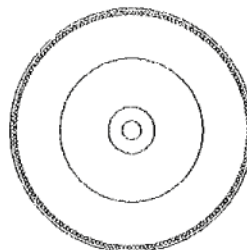
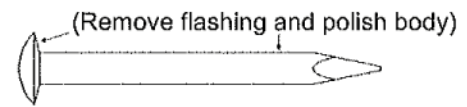
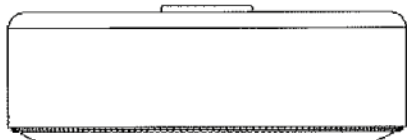
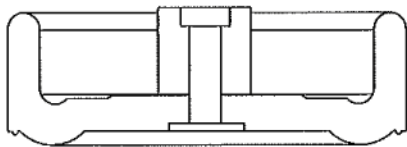


ILLEGAL AXLE CHANNELING

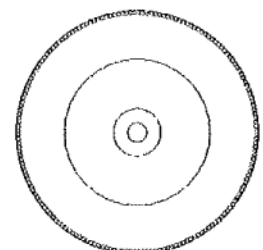
Do not over think this process. Lightly sand the wheel to remove the injection spot and retain the beading pattern around the outer edge of the wheel. This race is for the Boys! (KISMIF) Keep It Simple Make It Fun.

Illegal Wheel & Axle Diagrams

Legal Wheel & Axle Diagrams



Legal Stock



Legal Sanded (up to outer edge of bumps)